

Material : Alloy steel, Grade R4
 Finish : Self colored
 Temperature range : -20°C up to +200°C
 Standard certification : Certificate of Conformity
 3.1 material certificate EN 10204

Can be assembled with our range of swivels, CR-sockets and chains

GENERAL

SHACKLES

THIMBLES

SOCKETS

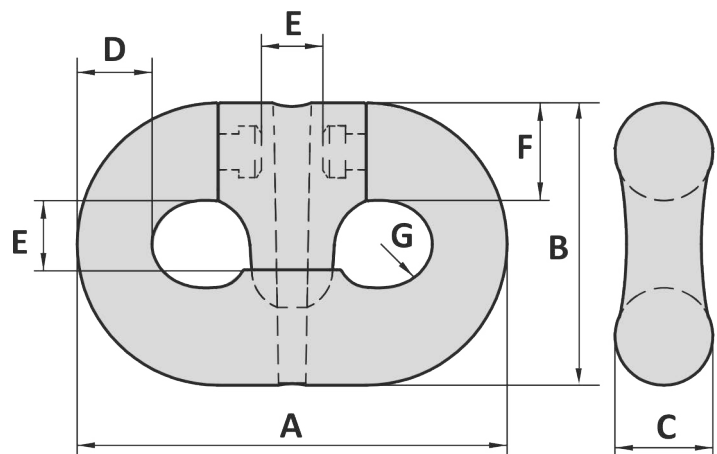
LINKS

SWIVELS

HOOKS

MOORING

OTHERS



Art. No.	Chain mm	Chain inch	CR socket No.	PL kN	MBL kN	A mm	B mm	C mm	D mm	E mm	F mm	G mm	Weight kg
40000003	76	3	522 - 528	4731	6001	456	296	103	76	89	103	46	58
40000005	84	3 ¼	524 - 529	5682	7208	498	324	112	83	97	112	50	82
40000004	89	3 ½	524 - 530	6310	8004	534	347	120	89	104	120	53	95

Tolerance: Forged parts ± 5%

Art. No.	Chain mm	Chain inch	CR socket No.	PL kN	MBL kN	A inch	B inch	C inch	D inch	E inch	F inch	G inch	Weight lbs
40000003	76	3	522 - 528	4731	6001	17 15/16	11 23/32	4 1/16	3	3 1/2	4 1/16	1 13/16	128
40000005	84	3 ¼	524 - 529	5682	7208	19 3/8	12 3/4	4 13/32	3 1/4	3 3/16	4 13/32	1 31/32	181
40000004	89	3 ½	524 - 530	6310	8004	21 1/2	13 23/32	4 13/32	3 1/2	4 3/32	4 23/32	2 3/32	209

Tolerance: Forged parts ± 5%

11-11-2013