

LIST OF MATERIAL

EXCEPT AS NOTED, SPECIFICATIONS ARE THOSE IN EFFECT ON NOV. 1, 1978

QUANTITIES FOR ONE SHIP

ITEM NO	QTY REQ	SYM NO	MATL	SPEC	DESCRIPTION	BUSHIP VENDOR NO	REMARKS	LSCC PT NO.	LOC	UNIT W.T. LB.
1	8		STL	COM'L	16" BITT	805-921989	ORDERED ON AMO 1102	43-2910-8279		
2	12				10" BITT	805-1843362		43-2900-8218		
3	36				8" TEE BITT			43-8225-8200		
4	2/100 FT		NYLON	MIL-R-24050	9" CRCMF DOUBLE BRAIDED MOORING LINE		100 FATHOMS 2 LINES STOWED ORDERED ON REF 10 ON REF 9			
5	4/1000 FT				6 1/2" CRCMF DOUBLE BRAIDED MOORING LINE		100 FATHOMS 2 LINES STOWED ORDERED ON REF 10 ON REF 9			
6	5		STL	COM'L	20" CLOSED CHOCK	805-1843363	ORDERED ON AMO 1104	49-3845-8310		
7	14				16" CLOSED CHOCK			49-3842-8275		
8	4				10" CLOSED CHOCK			49-3840-8218		
9	4				16" MOORING RING		ORDERED ON AMO 1103	49-9103-8275		
10	2				12" ROLLER FAIRLEADS		DEBERT, BANCROFT CO LTD OR EQUAL DWG NO 046 36-1	49-9108-8235		
11	2		VAR		9" HAWSER REELS		OV. HD MOUNTED (ORDERED ON REF 8)			
12	8				6 1/2" HAWSER REELS		BAD MOUNTED (ORDERED ON REF 8)			
13	1		HY80	MIL-S-16216	TOWING PADEYE		SEE NOTES 5 & 7	03-4072-0000		
14	1		STL		SHACKLE (PC#2-5 ON BUSHIP DWG)	804-4799441	SIZE FOR 10" CIRC HAWSER	43-4130-0000		SHACKLE TEST LOAD=257,000LB
15	0			COM'L	2 1/2" DIA BALDT END LINK			43-2715-8103		
16	1			MIL-L-2710	1 1/2" DETACHABLE LINK	805-2137659		43-2730-8082		
17	18 FT			MIL-C-19944	CHAFING CHAIN (DI-LOCK)	804-4799441	13 1/2 (3 FATHOMS LONG) (BALDT)	43-1491-8072		
18	900 FT		PLATED NYLON	MIL-R-24337	TOWING HAWSER 10" CRCMF		150 FATHOMS EACH (SEE ASS'Y 9) ORDERED ON REF 10 STOWED ON REF 9			
19	1		STL	AISI-B63T	PELICAN HOOK ASSY (PC#6-16 ON BUSHIP DWG)	804-4799441	SIZE FOR 10" CIRC HAWSER	43-2621-0000		
20	1			MIL-C-19944	END LINK (1 1/2" CHAIN SIZE)	52603-860341		43-2710-8072		
21	1			MIL-L-2710	1 1/2" DETACHABLE LINK	52603-860341		43-2735-8072		
22	1			COM'L	3/4" BALDT DETACHABLE ANCHOR CONNECTING LINK		1 1/2"-1 1/2" CHAIN SIZE	43-2805-8142		
23	2		STL	MIL-S-16216	ROPE COUPLING (FOR 10" CRCMF LINE)	53711-5800916		43-1052-0000		TO BE STAMPED FOR 2 1/2, 001 LB MIN BRK STRENGTH
24	0		STL	COM'L	ROUND PIN CHAIN SHACKLE		2-2150 3" CROSSBY LAWSHIN OR EQUAL	43-4120-8120		
25	2			MIL-C-17544	WARPING CAPSTAN	PTS 7658201	LAKE SHORE DWG 2D5-138	765821-01		
26	2			MIL-C-17544	BOAT HANDLING CAPSTAN	PTS 7658201	LAKE SHORE DWG 2D5-142	765821-04		
27	5		ALUM	COM'L	FIRST AID BOX	53702-921917	ORDERED ON REF 11			
28	15 FT		STL	A51M A500	2" SCHEDULE 40 SPLIT PIPE 30" LG		SEE DET 18-A	70-5340-1050		
29	40 FT				34" LG			70-5340-1050		
30	38			MIL-S-22698	CAP PLATE 10.2"					
31	4		VAR		CLOSURE PLATE, WATERTIGHT	1201-860083	FOR PC9 (ORD ON AMO 1103)	43-5451-0000		
32	2		VAR	MIL-C-2212	CONTROL SWITCH (FOR ITEM 25)		CUTLER HAMMER TYPE 482-T8			FON DET ON REF 17 ORDERED ON REF 15
33	2		VAR		(FOR ITEM 26)					FON DET ON REF 16 ORDERED ON REF 14
34	4		VAR	COM'L	SWIVEL FAIRLEADER	SMITH-BERGER MODEL 610-0	DWG 50450 D	49-9110-8058		FON DET ON REF 21
35	16		STL	MIL-S-22698	PADEYE 71.4" PL		SEE DET 20-G			
36	16				76.5" PL		19-G			

3
RH
056
RH
057
A

E' LSD 4 1/2 ONLY

A
B
C
D
E

3
RH
054
A

2
A
B
C
D

A
B
C
D

3
A
B
C

E' LSD 43 ONLY

E' LSD 43 ONLY

17

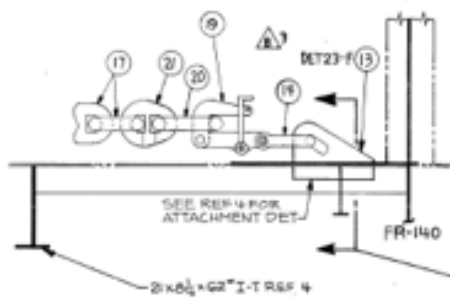
17

17

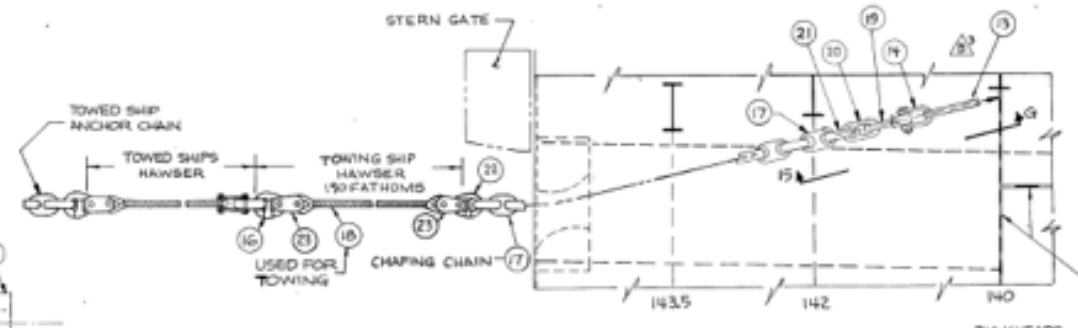
12

11

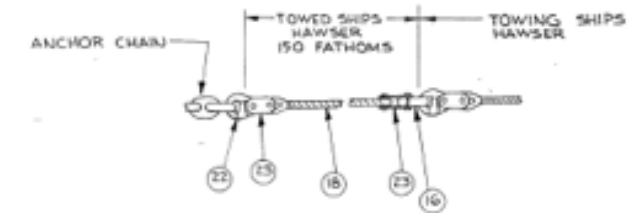
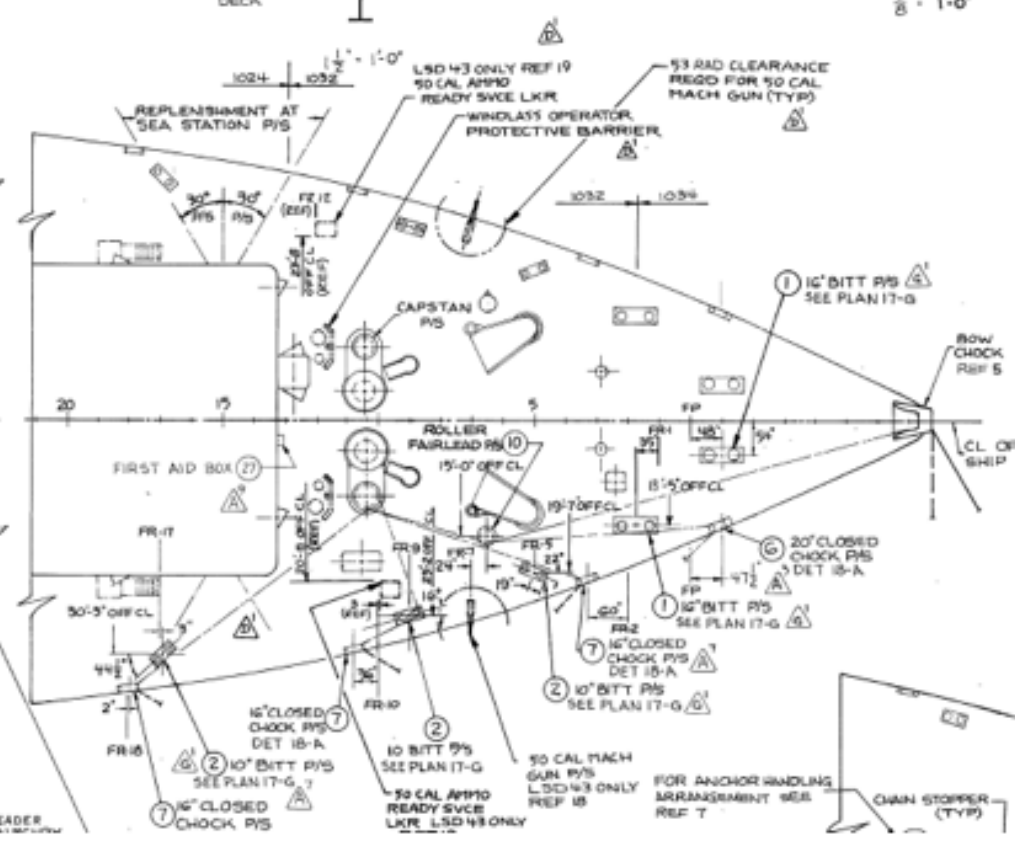
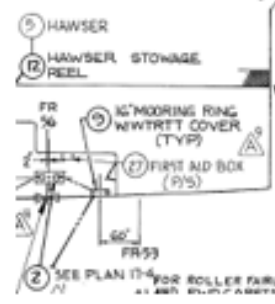
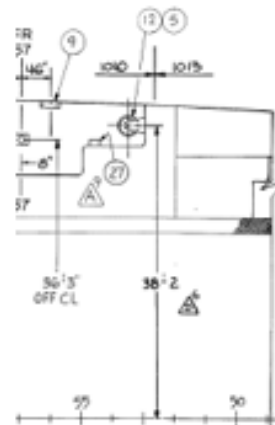
10



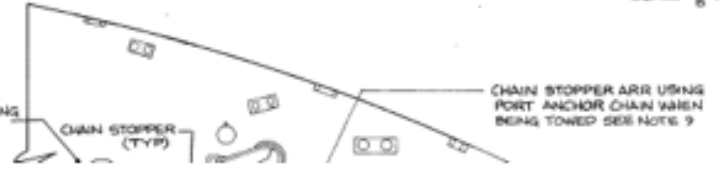
ELEVATION 15-G
 3/4" = 1'-0"
 20x16 12-G

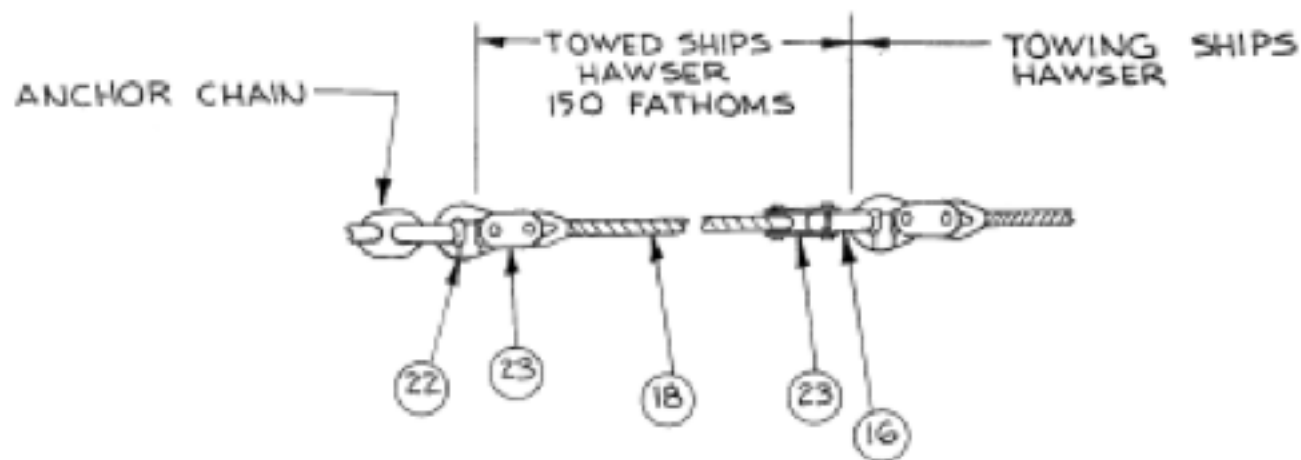


PLAN VIEW 12-G
 MAIN DECK STARBOARD AFT TOWING ARR
 3/8" = 1'-0"



DETAIL 10-D
 ARR WHEN BEING TOWED
 SCALE 3/8" = 1'-0"

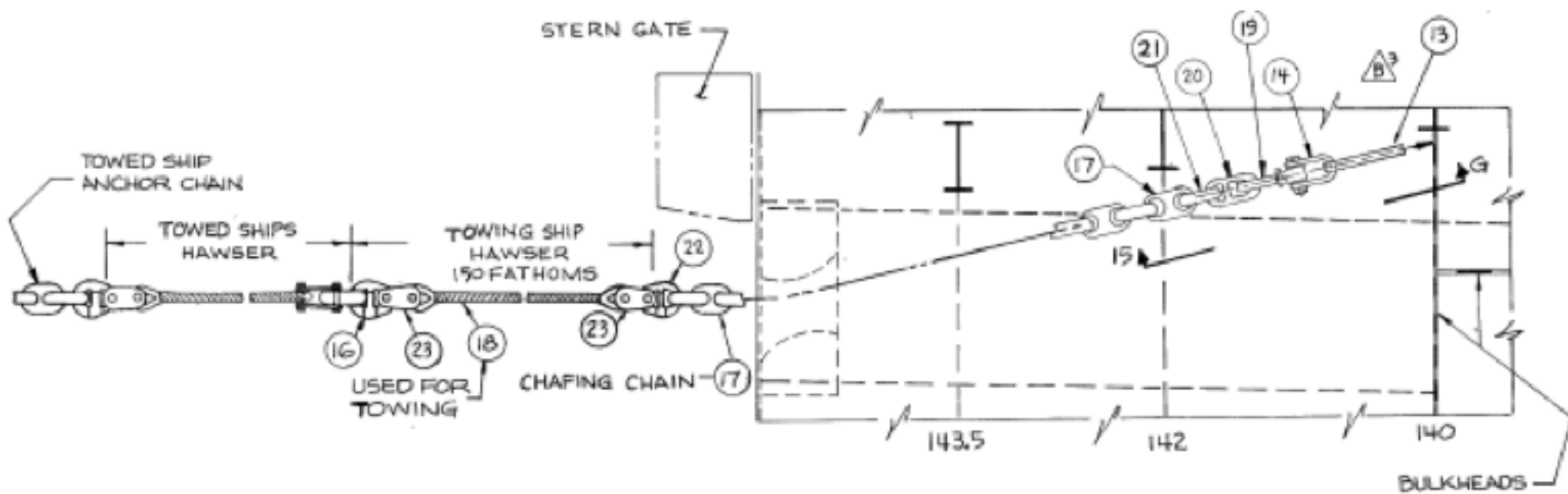




DETAIL 10-D

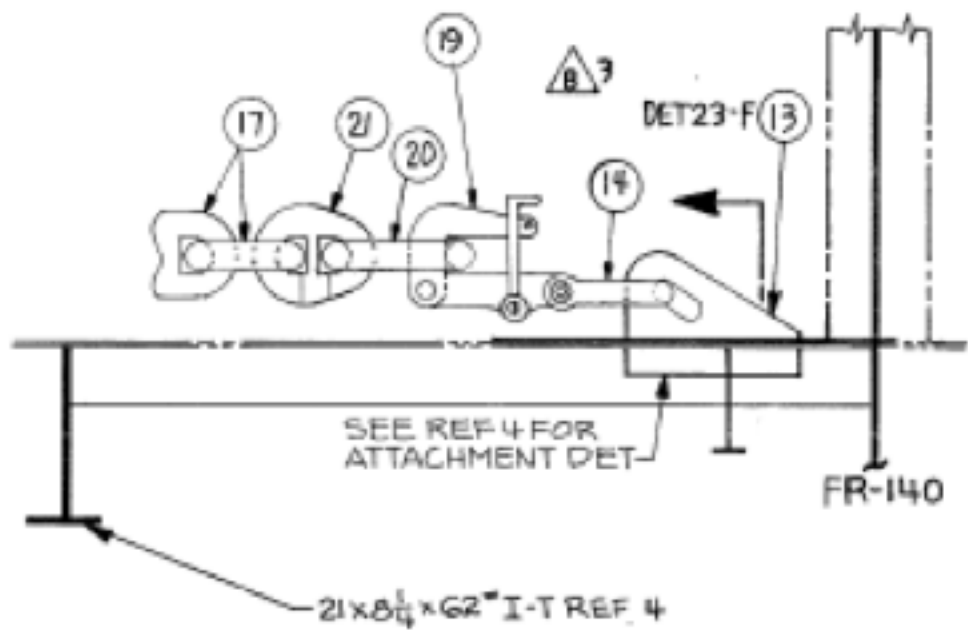
ARR WHEN BEING TOWED

SCALE $\frac{3}{8}'' = 1'-0''$



PLAN VIEW 12-G
 MAIN DECK STARBOARD AFT TOWING ARR

$\frac{3}{8}'' = 1'-0''$



ELEVATION 15-G

$\frac{3}{4} = 1'-0"$
 ZONE 12-G